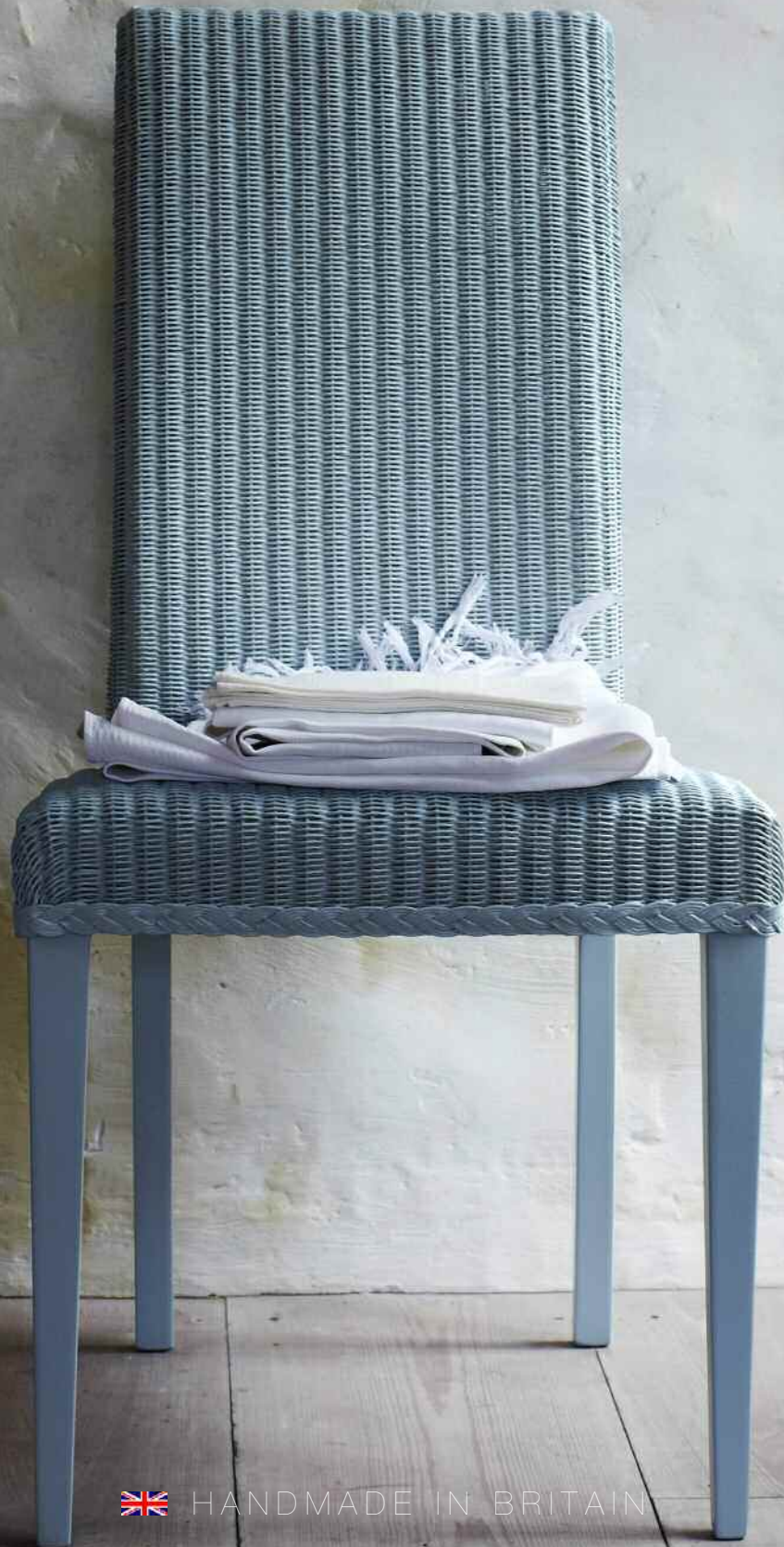
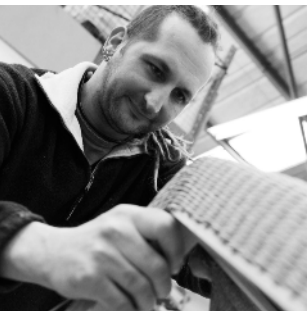


LLOYD LOOM

OF SPALDING



 HANDMADE IN BRITAIN



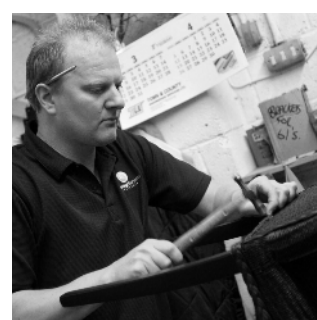
Lloyd Loom of Spalding is proud to be manufacturing in England; still making by hand the finest Lloyd Loom furniture and using techniques learnt in the 1930s.



The unique twisted paper and wire weave is made on our looms and we use the finest steam-bent beech wood for our frames. Visit www.lloydloom.com to find out more about the History of Lloyd Loom and watch the short Film on the Production of your furniture in our Spalding factory.



With its reputation for comfort, strength and longevity our furniture sits in many of the finest hotels and restaurants around the world. When you invest in Lloyd Loom of Spalding for your home you are buying an antique of the future.



Contents

Garden Room

Burghley	5
Babbington	6
Buxton	7
Boston Lounge	8
Garden Room Dining	9

Dining

York	11
Bourne	12
Derby	13
Wells	14
Boston	15
Bantam	16
Stamford	17

Café/Bar Kitchen

Newmarket	19
Belvoir	20
Bistro	21
Beeby	22
Burghley	23
Bistro Stools	24
Athene/Neusis	24

Bedroom/Bathroom

Linen Baskets	25
Barton	26
Trader	27
Balmoral	28
Bolero	28

Reception

Nemo	30
Madrid/Cubes	31
Orient	31

Contract/Projects	32
-------------------	----

Tables	33
--------	----

Fabric & Cushions	34
-------------------	----

Weave Colours	35
---------------	----



Garden Room

“Wicker” furniture was popular in Victorian conservatories, but once the much superior Lloyd Loom became available it replaced Wicker as the furniture of choice. That still holds true and the traditional Lloyd Loom style and finish goes perfectly in today’s Garden Rooms and Conservatories.

The Babbington is our most popular range for the Garden Room. Also consider a Balmoral (page 28) to accompany it for variety. Look at the Buxton or Boston Lounge for luxury, the Burghley for classic comfort, and for dining look at the York or Stamford ranges on pages 11 & 17. For a stylish teatime consider the Belvoir range on page 20.





Illustrated in Nearly White weave with cushions in customers own fabric.

CLASSIC
DESIGN

Burghley

The original classic Lloyd Loom armchair, recreating the elegance of the past. The model is available in many guises. Both armchair and sofa come with either a drop-in cushion seat, as illustrated, or the armchair is available with a padded or flat weave seat. The flat weave seat is often ordered with a 1 inch cushion making it ideal for casual dining in restaurants or the home. There are several tables which complement the Burghley such as the Burghley, Canterbury, Belvoir or Babbington tables. The Babbington footstool is also a good match.



BURGHLEY ARMCHAIR C001
W700 x D655 x H850
SEAT H460
padded seat available - C001P



BURGHLEY ARMCHAIR WITH SKIRT C001S W700 x D600 x H900
SEAT H460
padded seat available - C001SP



BURGHLEY ARMCHAIR WITH DROP IN SEAT C001D
W710 x D570 x H830
SEAT H470



BURGHLEY SOFA WITH DROP IN SEAT S001D
W1500 x D640 x H835
SEAT H460



CANTERBURY TABLE WITH GLASS T013G DIA590 x H460
also available without glass - T013W



Illustrated in Tarragon weave with cushions in Ian Mankin Avon Check Mint



BABBINGTON ARMCHAIR
C081 W820 x D850 x H800
SEAT H470



BABBINGTON 2 SEATER SOFA
S082 W1560 x D850 x H800
SEAT H470



BABBINGTON 3 SEATER SOFA
S083 W1910 x D850 x H800
SEAT H470



BABBINGTON FOOTSTOOL
ST084 W620 x D480 x H480



BABBINGTON SOFA TABLE T014W
W590 x L1200 x H460
available with glass T014G

Babbington

For conservatories meant for relaxing. The whole range is great value and includes a comfortable armchair and two and three seater sofas. There is also an accompanying footstool - and a sofa table available with or without a shelf. Cushions can be made in any of our standard fabrics or your own choice of fabric.

Consider the Balmoral chair – page 28 as a partner for the Babbington.



Illustrated in Sage weave with cushions in Madura Oatmeal fabric

Buxton

Deep and luxurious seating for your conservatory – or anywhere else you want to relax... The chair is fashionably wide – but still surrounds you comfortably. There is also a stylish companion table in two sizes.



BUXTON GRAND CHAIR C071
W1000 x D880 x H820
SEAT H460



BUXTON 2 SEATER SOFA S065
W1600 x D880 x H820 SEAT
H460



BUXTON COFFEE TABLE T028W
W750 x D1200 x H430
available with glass T028G



BUXTON SIDE TABLE T031W
W590 x D590 x H430
available with glass T031G



Illustrated in Espresso weave with cushions in customer's own fabric

ULTIMATE
LUXURY

Boston Lounge

A lounge set with contemporary appeal which will look at home in any interior setting. It has been designed for comfort with carefully upholstered cushions and a high back for support. The range includes a comfortable chair, 2 and 3 seater sofas and a substantial footstool.



BOSTON LOUNGE ARMCHAIR C050
W720 x D900 x H925
SEAT H440
includes 1 lumbar or scatter cushion



BOSTON LOUNGE 2 SEATER SOFA S062
W1530 x D880 x H915
SEAT H440
includes 2 lumbar or scatter cushions



BOSTON LOUNGE 3 SEATER SOFA S063
W1820 x D880 x H915
SEAT H440
includes 2 lumbar or scatter cushions



**BOSTON LOUNGE
FOOTSTOOL ST051**
W650 x D460 x H430



Wells Dining Chairs illustrated in Tarragon weave

Dining in the Garden Room

The Conservatory or Garden room is increasingly used for dining. Often it is an extension to the kitchen and the centre of the home, a place where Lloyd Loom dining chairs come into their own. Their clean modern lines are complemented by the woven fabric which gives a natural "outdoor" feel.

Consider the variety displayed in the next few pages, bearing in mind the colour palette of the garden. Once you have decided on your preferred model, go to page 35 where all of our weave colours are shown and look especially at the lighter and more natural shades.

Dining

Lloyd Loom weave is the up to the minute choice for dining chairs. The clean lines give a classic yet contemporary elegance, whilst the natural weave confers a relaxed mood.

Our dining chairs come in all shapes and sizes. The elegant Wells and Boston range are ideal for traditional dining; the Bourne and Derby have a contemporary tapered square leg design; the stylish Bistro and Bantam are ideal for a kitchen, café or restaurant. For the conservatory consider the original Lloyd Loom dining chair, the York and Stamford.





YORK DINING CHAIR
C037MSP
W480 x D560 x H990
SEAT H475



YORK DINING CHAIR
C037MSPB
W480 x D560 x H990
SEAT H475
double weave back



Illustrated in Fawn weave with non-standard cushions in customer's own fabric

York

A popular and reasonably priced dining chair with a padded weave seat. It is shown here with a non-standard cushion. In cases where a loose cushion is desirable, we would recommend using the Stamford chair with a "flat weave seat". We can supply 1 inch cushions in the fabric of your choice.



Illustrated in Bracken weave



Bourne

A neat contemporary dining chair with square section tapered legs. It has quickly become one of our most popular chairs and is available with a standard padded weave seat or with a fabric seat.



BOURNE DINING CHAIR C025B
W460 x D520 x H970 SEAT H460
double weave back



BOURNE DINING CHAIR WITH FABRIC SEAT C025FB
W460 x D520 x H970 SEAT H470
double weave back



DERBY DINING CHAIR C075
W510 x D580 x H860
SEAT H460



DERBY ARMCHAIR C075A
W590 x D580 x H860
SEAT H460



Illustrated in Espresso weave

Derby

This strong modern dining chair has square section tapered legs and is wider than standard. The model is particularly popular as a carver.



Illustrated in Tarragon weave

Wells

A very elegant high backed dining chair with a padded seat in weave or any of our standard fabrics, or if you prefer, with a fabric of your choice. This chair is available with either a "single weave back" as in the photograph, or with a "double weave back" as shown in the bottom right illustration.



WELLS DINING CHAIR CO41
W440 x D650 x H1070
SEAT H460



WELLS DINING CHAIR CO41B
W440 x D650 x H1070
SEAT H460
double weave back



**WELLS DINING CHAIR WITH
FABRIC SEAT CO41F**
W440 x D650 x H1070
SEAT H460



**WELLS DINING CHAIR WITH
FABRIC SEAT CO41FB**
W440 x D650 x H1070
SEAT H460
double weave back



Illustrated in Espresso weave

BRITISH
ELEGANCE

Boston

An elegant and substantial dining chair that is also very popular as a carver. The carver is available with a deep cushion, fully upholstered or with a flat weave seat to take a 1 inch cushion, the chair comes with a padded seat.



BOSTON DINING CHAIR C039SSP
W500 x D610 x H1000 SEAT H450



BOSTON CARVER C039
W640 x D620 x H1000 SEAT H450



**BOSTON CARVER WITH
DROP IN SEAT C039D**
W645 x D620 x H1000 SEAT H500



**BOSTON CARVER FULLY
UPHOLSTERED C039U**
W640 x D620 x H1000 SEAT H500



Illustrated in Sage weave

Bantam

The Bantam is one of our most popular dining chairs. It is a compact chair, very comfortable and ideal for the home environment or for restaurants. It is available with either a weave or fabric seat. All models are available with the option of a double weave back.



BANTAM DINING CHAIR C044
W485 x D585 x H950 SEAT H465



BANTAM DINING CHAIR C044B
W485 x D585 x H950 SEAT H465
double weave back



**BANTAM DINING CHAIR WITH
FABRIC SEAT C044F**
W485 x D585 x H950 SEAT H465



**BANTAM DINING CHAIR WITH
FABRIC SEAT C044FB**
W485 x D585 x H950 SEAT H465
double weave back



STAMFORD DINING CHAIR C019

W500 x D580 x H950

SEAT H460

padded seat available - C019P



STAMFORD DINING CHAIR WITH
MINI SKIRT AND PADDED SEAT
C019MSP

W500 x D560 x H950

SEAT H465

flat seat available - C019MS



ORIGINAL
DESIGN

Illustrated in Honey weave

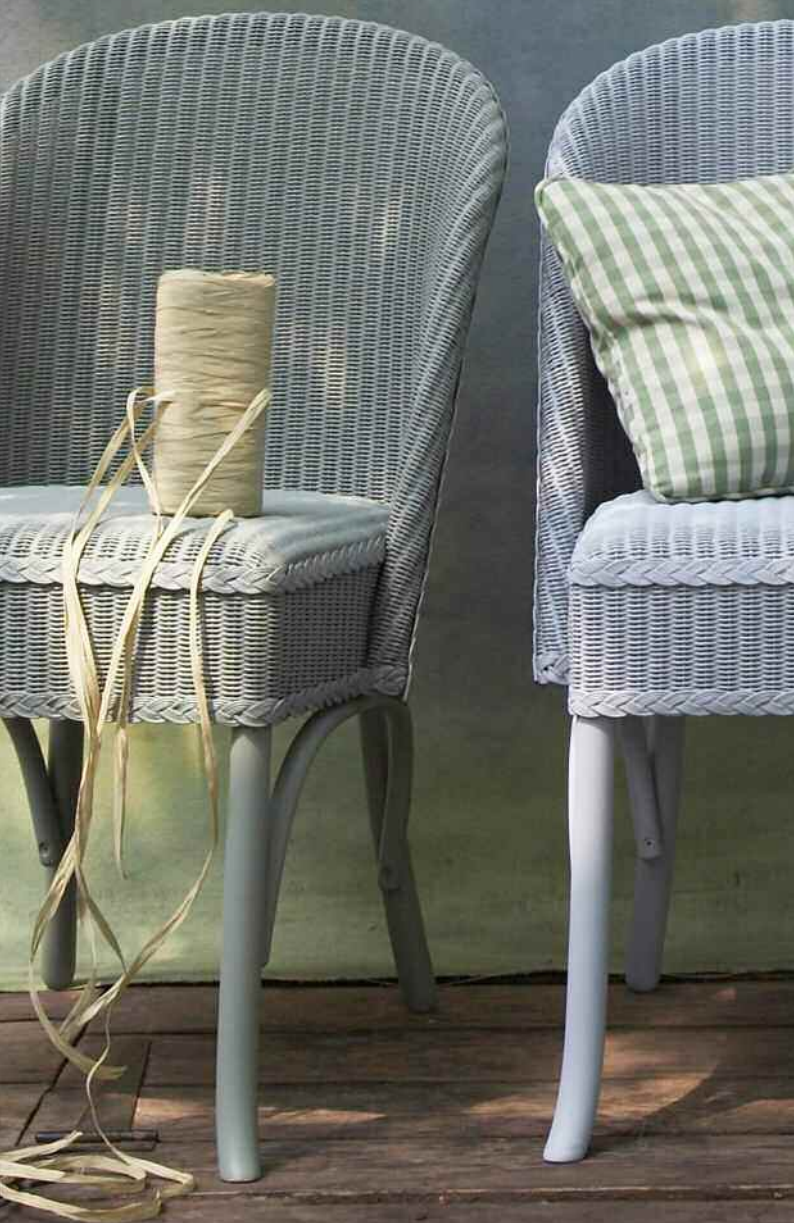
Stamford

One of the original Lloyd Loom of Spalding classics, available with or without a mini skirt and with a flat or padded weave seat - 1inch loose cushion available to compliment the flat weave seat option. There is a matching Stamford table in several standard sizes.

Café/Bar & Kitchen

Lloyd Loom chairs, stools and tables have always been popular in tearooms, bars and cafes and can be seen in famous establishments around Great Britain and Europe. It is the furniture of the moment for the modern kitchen and home extension.

View our suggestions on the next few pages and consider the Babbington (Page 6) for that relaxing corner.





Newmarket

A unique heritage design, dating from the 1930s that still appeals and is appropriate in many settings. It is an extremely comfortable and very pretty chair which is surprisingly sturdy. It creates a cosy environment in the kitchen and has been successfully used in many cafés and bars looking for something special. We can adjust the height of the stool to suit a variety of situations if required.



NEWMARKET DINING CHAIR
C006 W470 x D650 x H845
 SEAT H460



NEWMARKET STOOL ST006
 W520 x D640 x H1140
 SEAT H810



BELVOIR ARMCHAIR C002
W610 x D655 x H850 SEAT H460



BELVOIR ARMCHAIR WITH SKIRT C002S
W610 x D600 x H850 SEAT H460
padded seat available - C002SP



BISTRO ROUND TABLE T010W
DIA760 x H760
available with glass - T010G



BISTRO SQUARE TABLE T011W
W760 x L760 x H760
available with glass - T011G

Belvoir

One of our most popular chairs which takes up less room than the similar but more curvaceous Burghley. It is often used as a casual dining chair and is available with either a padded or flat weave seat. The flat weave seat is often used with a 1 inch cushion which is available in any of our standard fabrics or in the fabric of your choice.



Illustrated in Duck Egg weave



Bistro

One of our most sought after ranges - ideal for the kitchen or for café/restaurants. There are stools in various shapes and sizes to match the chair – see page 24.



BISTRO DINING CHAIR C038
W430 x D550 x H880
SEAT H460



BISTRO DINING CHAIR C038B
W430 x D550 x H880
SEAT H460
double weave back



BISTRO LOW STOOL ST003
W420 x D420 x H460



BISTRO HIGH STOOL ST005
W420 x D420 x H760



BISTRO BAR STOOL ST038
W430 x D440 x H880
SEAT H760



BEEBY ARMCHAIR C007
W560 x D620 x H820 SEAT H460
padded seat available - C007P

COMPACT
DESIGN

Illustrated in Nearly White weave

Beeby

Designed in the classic Lloyd Loom style and especially popular for dining. The Beeby has low side arms to fit under most tables, saving space and making it ideal for casual dining.



Illustrated in Ivory weave

Burghley

The original classic Lloyd Loom armchair, evocative of the elegance of the past and available in many guises. The flat weave seat is often ordered with a 1 inch cushion making it ideal for casual dining in restaurants or the home. There are several tables that complement the Burghley such as the Burghley, Canterbury, Belvoir or Babbington tables and for dining the Bistro table shown on page 33. The table illustrated is not available for sale.



BURGHLEY ARMCHAIR C001
W700 x D655 x H850 SEAT H760
padded seat available - C001P



BURGHLEY ARMCHAIR WITH SKIRT C001S
W700 x D600 x H900 SEAT H460
padded seat available - C001SP



Illustrated in Bracken weave



Illustrated in Bracken weave

Bistro Stools

A classic and elegant stool shape which matches the Bistro chair. The style comes in two heights and also with a curved back as in the illustration.

Athene & Neusis

A contemporary bar-stool in two heights to suit either kitchen work top, or bar. A similar style stool is also available without a weave back - the "Neusis".



BISTRO LOW STOOL ST003
W420 x D420 x H460

BISTRO HIGH STOOL ST005
W420 x D420 x H760

BISTRO BAR STOOL ST038
W430 x D440 x H880 SEAT H760



ATHENE STOOL ST010
W450xD470xH1040 SEAT H765
available at H965 SEAT H690



NEUSIS STOOL ST008
W360 x D360 x H780
available at H690

Bedroom Bathroom

Until the middle of the last century nearly every house had its comfortable Lloyd Loom chair in the bedroom and, where size allows, the bathroom. This is becoming the norm again, both at home and within the hospitality trade. What could be more welcoming and nostalgic?

We designed the Barton range with practicality in mind. It is new and very affordably priced. If heritage is what you desire, look at the Trader range and our linen baskets. Any of our classic chairs (see the "Garden Room" section) are perfect for the bedroom or bathroom – but two that are especially popular for the more substantial bathroom are the Bolero and Balmoral.



Linen Baskets



CLASSIC
LB003/H

W400 x D360 x H550/650



QUADRANT
LB004/H

W330 x D330 x H550/650



SEMI CIRCLE
LB005/H

W400 x D320 x H550/650



Illustrated in Nearly White weave

Barton

The Barton set is new to our range. It was designed with practicality in mind as a simpler version of the "Trader" range. It is very affordably priced and comes in any of our beautiful standard colours. There is also a bedhead and stool to accompany the range - shown opposite with the "Trader" items.



BARTON CONSOLE TABLE
TC01G W1010 x D470 x H770
 available without glass - TC01W



BARTON DRESSING TABLE
TC02G W1010 x D550 x H770
 available without glass - TC02W



BARTON BEDSIDE CABINET
TC03G W460 x D400 x H650
 available without glass - TC03W



Illustrated in Duck Egg weave



Trader

This is true Lloyd Loom heritage style from the 1930s. The dressing and bedside tables are classics, as is the stool. The stool is just as at home with the Barton range and the modern Woodstock headboard is a simple design, comfortable with most styles. All pieces are available in any of our beautiful colours.



TRADER DRESSING TABLE
TDT100G
W1010 x D560 x H780 (630)
available without glass - TDT100W



TRADER BEDSIDE CABINET
TBT45G
W460 x D435 x H710 (630)
available without glass - TBT45W



TRADER DRESSING TABLE STOOL
ST002
W535 x D330 x H430



WOODSTOCK HEADBOARD
D40 x H920 x W(4ft/4ft6"/5ft/6ft)
wall mounted



OTTOMAN
OT001
W880 x D380 x H450



Illustrated in Pebble weave

Balmoral

The Balmoral is a classic design that lives up to its name. It is a large, comfortable and curvaceous armchair with a padded weave seat.



BALMORAL ARMCHAIR C003SP
W615 x D715 x H925 SEAT H440



Illustrated in Fawn weave

Bolero

One of our most admired models of recent years, combining the traditional Lloyd Loom features with a more contemporary line. It is striking either as a single chair for the bedroom or reception or as a casual dining chair - as it has been used in many restaurants and cafes. It is available with either a weave or fabric seat.



BOLERO ARMCHAIR C045W
W570 x D640 x H825 SEAT H460



BOLERO ARMCHAIR WITH FABRIC SEAT C045F
W570 x D640 x H825 SEAT H470

Reception

The domestic hall or the reception area of a hotel or restaurant always benefits from a statement piece - and this is where some of our most interesting designs come into their own.

Whether you have room only for one striking Nemo, or space for an arrangement of Madrids, tailored to fit and covered in exciting fabric – we have something that will add grace, heritage and British flair to your design.

Shown on the next couple of pages are just a few suggestions for models, also try the "Garden Room" and "Bedroom" sections for more inspiration.





NEMO CHAIR DG01
W790 x D655 x H735 SEAT H420

FUTURE
CLASSIC

Illustrated in Clear weave

Nemo

A modern and award winning design. A statement and sought after piece which will become a future classic.



Illustrated in Nearly Black weave



Illustrated in Sage weave with cushions in customer's own fabric

Madrid

A simple sofa and matching chair which does not follow the more usual bent-wood designs of classic Lloyd Loom. It works well in reception areas and can be made in a number of widths to the client's specification. It is shown here with a delos cube seat.

Orient

A 1930's classic, named after ss-Orient, the cruise ship for which it was originally commissioned. It has a 4inch drop-in cushion which can be upholstered in any of our standard fabrics or in the fabric of your choice. Note that the seat height is lower than standard.



MADRID ARMCHAIR MC01
W860 x D810 x H775
SEAT H430



MADRID SOFA MS01
W1870 x D810 x H775
SEAT H430



ORIENT ARMCHAIR CO05D
W600 x D660 x H715
SEAT H430



DELOS CUBE WITH FIXED CUSHION CUBE02 W420 x D420 x H480
also available with lift up seat (**CUBE07**)



Wells Dining Chairs - SOUTH SANDS HOTEL

Contract Projects

Lloyd Loom of Spalding has been supplying the hospitality and leisure industries with classic English dining chairs and Reception pieces for many years.

Working with Interior Designers, Specifiers and Owners, we can offer advice on product selection and suitability, fabrics and colours, as well as offering space planning services and the possibility of bespoke adjustments, tailor making to a client's requirements.



Stamford & Burghley - TRESKO ESTATE



Bistro & Bantam - CHATSWORTH HOUSE



Wells Dining Chairs - TITCHWELL MANOR



Nemo - MEDIA CAFÉ



Bantam Dining Chairs - NEWMARKET RACECOURSE

Tables

Burghley



BURGHLEY COFFEE TABLE
T001W/G DIA590 x H460



BURGHLEY LARGE COFFEE TABLE
T002W/G DIA760 x H460



BURGHLEY TEA TABLE
T003W/G DIA590 x H715



BURGHLEY LARGE TEA TABLE
T004W/G DIA590 x H715

Belvoir



BELVOIR COFFEE TABLE
T009W/G W590 x D590 x H460



BELVOIR SOFA TABLE
T005W/G W590 x L1200 x H715



BELVOIR TEA TABLE
T006W/G W590 x D590 x H715



BELVOIR LONG TEA TABLE
T008W/G W590 x L1200 x H715

Stamford



STAMFORD ROUND TABLE
T020W/G/O DIA1000 x H760



STAMFORD LARGE ROUND TABLE
T021W/G/O DIA1200 x H760



STAMFORD SQUARE TABLE
T022W/G/O W900 x D900 x H760



STAMFORD LONG TABLE
T023W/G/O W900 x L1800 x H760

Banbury



BANBURY RECTANGLE TABLE
T064 W900 x L1500 x H770



BANBURY LONG TABLE
T065 W900 x L1800 x H770



BANBURY ROUND TABLE
T066 DIA1200 x H770

Bistro



BISTRO ROUND TABLE
T010W/G DIA760 x H760



BISTRO SQUARE TABLE
T011W/G W760 x L760 x H760

Buxton



BUXTON SIDE TABLE
T031W/G W590 x L590 x H430



BUXTON COFFEE TABLE
T028W/G W590 x L1200 x H430

Babbington



BABBINGTON SOFA TABLE
T012W/G W590 x L1200 x H460



BABBINGTON SOFA TABLE (SHELF)
T014W/G W590 x L1200 x H460

Canterbury



CANTERBURY COFFEE TABLE
T013W/G DIA590 x H460

All of our tables (except for the Banbury) are available with weave or weave & glass tops. Our Stamford dining tables are also available with oak tops. Please specify W, G or O against the code. Brass clips are used as standard with our glass tops, a chrome finish is also available.

Fabrics & Cushions

LINARA COLLECTION

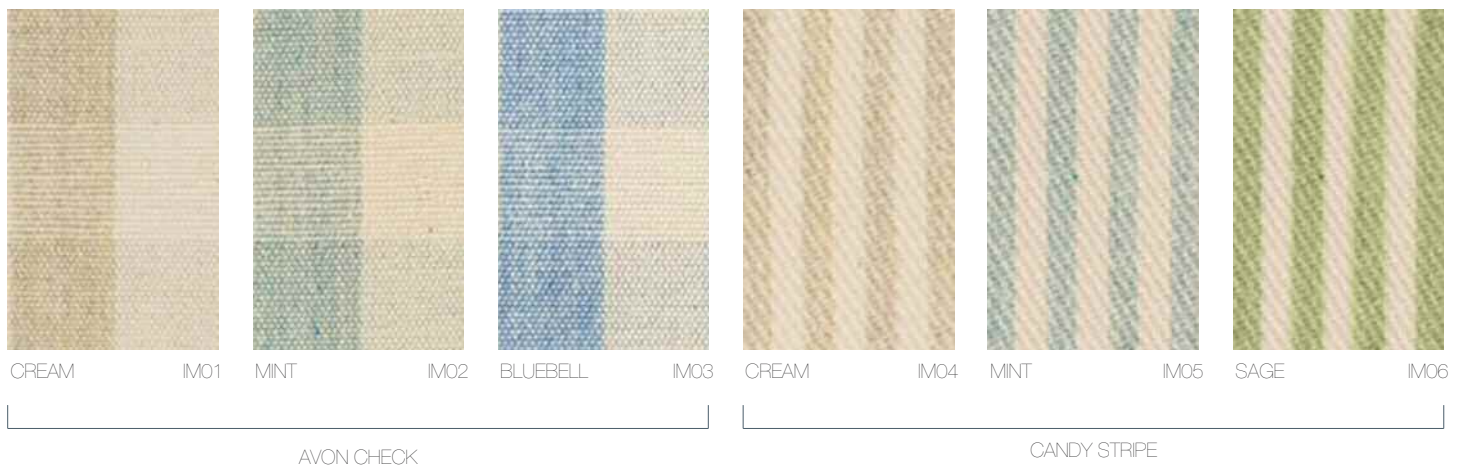
63% Cotton, 37% Linen



The above fabrics and all other shades in the Linara range are available as standard on our furniture. We also offer a complete COM service, please contact us for the fabric requirements if you wish to use your own material.

IAN MANKIN COLLECTION

100% Cotton



AVON CHECK

CANDY STRIPE



Most of our chairs can be supplied with 1 inch cushions.

If you would like to use any other fabrics (Customer's Own Material - COM) for cushions or upholstery we would be pleased to arrange this for you.

Weave Colours

STANDARD WEAVE COLOURS



CLEAR W01



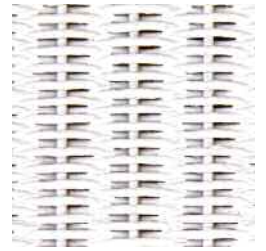
HONEY W02



IVORY W03



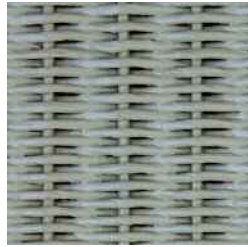
NEARLY WHITE W04



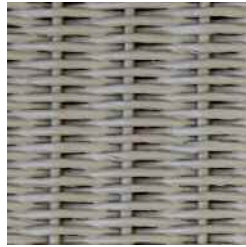
BRILLIANT WHITE W05



SAGE W06



TARRAGON W07



PEBBLE W08



BRACKEN W09



FAWN W10



DUCK EGG W11



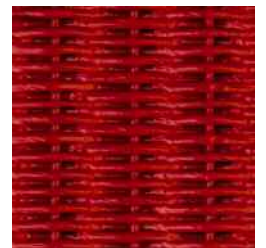
ARCTIC GREY W12



ESPRESSO W13



NEARLY BLACK W14



SIGNAL RED W15

These are our standard weave colours. We can also supply any RAL or F&B colour at a surcharge. All colours are represented as accurately as the print process allows. Please contact us for swatches if exact colour match is critical.

Although every effort is made to ensure consistency of product it should be noted that, particularly in respect of handmade furniture, slight variations in both colour and specification can occur. The colour of new furniture will inevitably vary compared to furniture which has been produced some time ago. Fabrics may also vary from batch to batch. We therefore recommend that wherever possible customers purchase all of their furniture requirements at the same time if the best possible colour match is critical.

Every care is taken to ensure that illustrations/photographs in our brochures and on our website are as accurate as possible, but these should always be used as a guide only particularly in relation to colour. Some images may have been digitally altered.

Although every care is taken to ensure that the information contained herein is correct and complete, no liability can be accepted in respect of the correctness or completeness of the information given. We reserve the right to amend the specification of our products at any time. All products are subject to availability.



LLOYD LOOM

OF SPALDING



HANDMADE IN BRITAIN

Lloyd Loom of Spalding - Wardentree Lane
Spalding - Lincolnshire - PE11 3UG - UK

Tel: +44 (0)1775 712 111
Sales: +44 (0)1775 724 358
Fax: +44 (0)1775 710 571
Email: info@lloydloom.com

www.lloydloom.com

